



Leader for Rugged Mobility Value

Fully Rugged Mobile Computing Solution

Overview

Winmate's Rugged Tablet PC ranks amongst the most rugged computers in the world. It is built with innovative technology to be flexible, adaptive and portable for use in tough and harsh environments. Read on to discover how this product can fit your application.

Why Rugged Tablet PCs

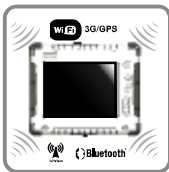
Fulfill the demand for outdoor mobile PC usage such as investigation, detecting and real-time data communication. After years of research, WINMATE's Rugged Tablet PC enables users to "stay connected" under any environmental or weather condition, in the office or outdoor construction site. Multiple platforms and sizes are available to fit all applications. Ultra low power embedded chipsets maximize operating time and reliability.

The concept

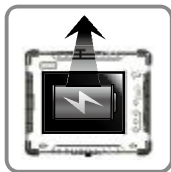
Ruggedness Design



Communication



Independency



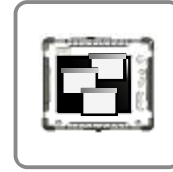
Visibility



Ergonomic



Software Application



Fanless



Ruggedness Design

Outdoor applications for electronic devices are increasing as the worldwide market grows. To understand a computer's "ruggedness", specification definitions, and the level required including Industrial, Military and Construction is important. The industry standard testing will be elevated to the strict environmental requirements of U.S. Mil-461E in vibration, shock, and drop.

Aluminum- magnesium housing



Protection rubber on corner

Dust and water proof – IP65

Communication

Field-proven mobile technology for any environment integrated Wireless, Bluetooth, GPS, Touch screen Panel & Reliable Hot-Swap Battery Solutions for any mobile usage.

Independency

To be independent from the mains power source, Winmate uses the best power saving technology and increases the operating time of the unit. Winmate's mobile tablet can provide :

Battery operating time: 3.5 Hours, sleeping mode by 6 hours

Battery Charging time: 2.5 Hours





Leader for Rugged Mobility Value

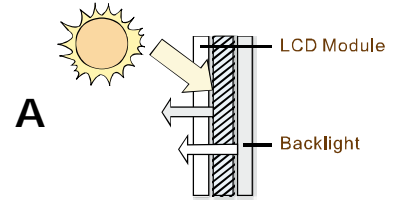
Fully Rugged Mobile Computing Solution

Visibility

Enhanced Visibility with Winmate's unique technologies

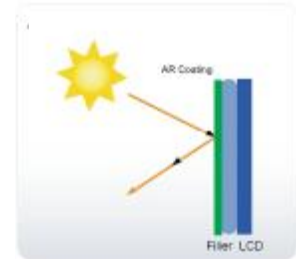
A. Transflective technology enhances contrast ratio without extra heat for both indoor and outdoor conditions.

B. Optical bonding helps you to reduce the reflection and water mist problems with strict environmental requirements of U.S. Mil-461E in vibration, shock, and drop.



With sufficient reflective illuminations LCD becomes readable everywhere

B



Ergonomics

Ergonomic is a key factor in the design of tablet PC's. A good ergonomic design is convenient and comfortable for the user.

Winmate has created a user-friendly design and develops accessories for ease of use outdoors.



Multi-functional Desktop Docking station >>

With multi-function design, the docking station can support battery charging and also function expansion as USB, LAN and VGA. (depends on platform)



Vehicle Mount Kit >>

Our rugged vehicle mounting kit design can support universal arm mounting to fix in any transportation vehicle such as heavy vehicles, forklift and police cars.

**With charger inside for optional*



Handstrip >>

The ergonomic Handstrip can help you handle the Rugged Tablet PC with ease and comfort.



USB Keyboard >>

USB keyboard used with a Docking Station or Vehicle mount kit.



Carrying Handle >>

Easy to use side-handle belt for users to carry and hold the Tablet (Especially recommended when plug PCMCIA/PCIE Express Card on top side)



Shoulder Handle >> (Carrying Belt)

With the four corner locks, and the carry belt(shoulder strap) it is ergonomically designed as a hands-free product.



Carry Bag >>

Designed to fit the Rugged Tablet PC, this carry bag is very convenient to carry other accessories.



Car Power Charger >>

With the Car Power charger you can recharge your Rugged Tablet PC in any vehicle



Leader for Rugged Mobility Value

Fully Rugged Mobile Computing Solution

Software Application

Winmate cares about practical convenience. There are three programmable function buttons labeled F1, F2 and F3. Each responds to either a short or long push to assign a total of six functions. Programming is via the HotTab utility shown to the right. You can select from the default functions and applications and assign them to the keys, or browse for any other function or application. For example, we have assigned the onscreen keyboard to F1, the calculator to F2, and My Documents to F3.



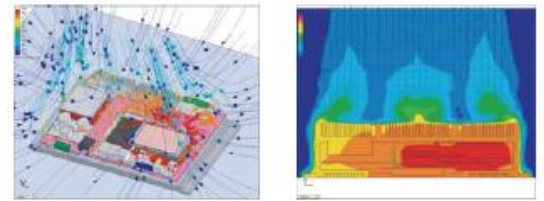
Fanless

Three main technology application-

- Low Power, Fanless Chipset
- Thermal Design
- Low Surface Temp
- Long operating time

Professional Thermal System Design

For stable and durable systems, we conduct thermal design, simulation and testing to evaluate the optimal power dissipation solution.



Winmate Atom series Mobile tablet is the best power saving solution for Fanless application. With Intel Atom N270 inside, it only takes **2.5Watt!** for the CPU

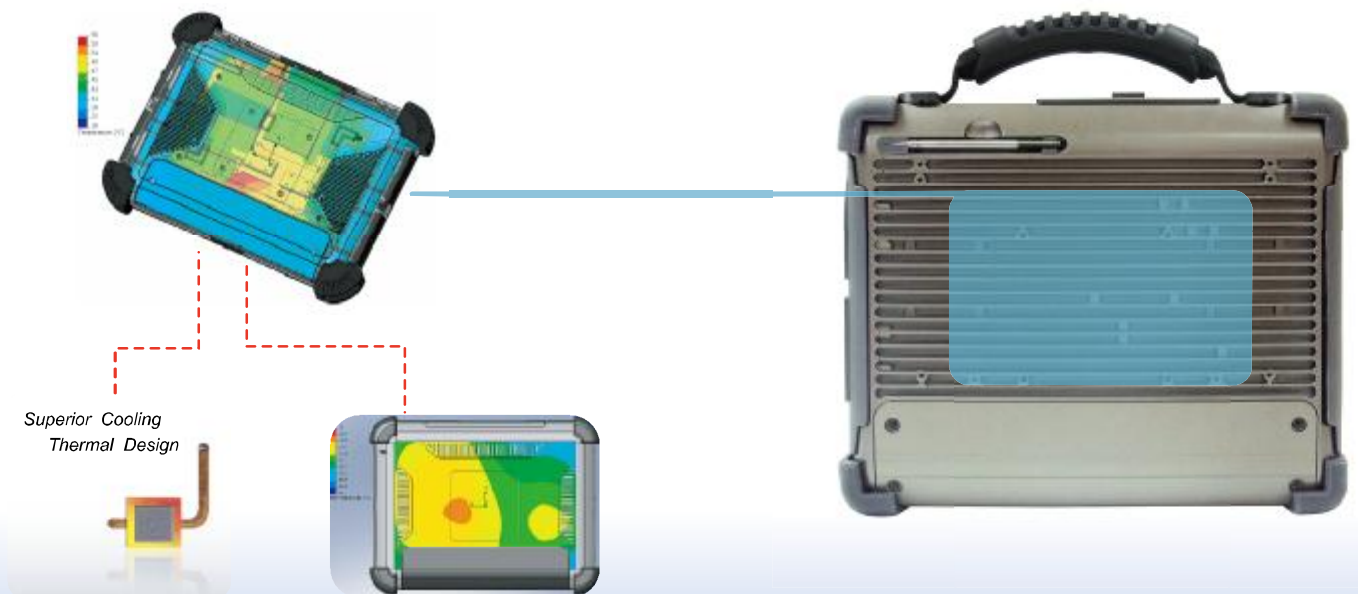
New Atom!!

IA81

Intel 945GSE

Atom N270 1.6GHz

PCIExpress / MiniPCIe



With the removable thermal heap pipe technology, heat passes to the outside.



Leader for Rugged Mobility Value

Fully Rugged Mobile Computing Solution

Platform Choice

In order to satisfy all the different applications and needs, Winmate's Rugged Tablet PC Series has three sizes and can be equipped with different CPU platforms.

8.4" Rugged Tablet PC

MIL-810F Std Tablet PC supporting Intel Atom / Core 2 Due/ Celeron M



| | Core Name | Platform Chipset | Support Performance | Expansion (Ex/In) |
|---|-----------|------------------|--|----------------------------|
| New Atom | IA80 | Intel 945GSE | Atom N270 1.6GHz | PCIExpress / MiniPCIe |
| Quality | I680 | Intel 855GME | Celeron M 1.0GHz | |
| Extreme Low Power | 1980 | Intel US15W | Atom Z530 1.6GHz | PCIExpress / SDIO(SD Card) |
| Note: 8.4" w/ Intel Core 2 Duo/ Celeron M 1.2GHz w/945GME is available for special request. | | | | |
| | 1880 | Intel 945GME | Core 2 Duo 1.06GHz Celeron M 1.2GHz | PCIExpress / MiniPCIe |

10.4" Rugged Tablet PC

MIL-810F Std Tablet PC supporting Intel Atom / Core 2 Due/ Celeron M and VIA C7M



| | Core Name | Platform Chipset | Support Performance | Expansion (Ex/In) |
|-------------------|-----------|------------------|--|----------------------------|
| Perform High | 1880 | Intel 945GME | Core 2 Duo 1.06GHz Celeron M 1.2GHz | PCIExpress / MiniPCIe |
| New Atom | IA81 | Intel 945GSE | Atom N270 1.6GHz | PCIExpress / MiniPCIe |
| Quality | I681 | Intel 855GME | Celeron M 1.0GHz | |
| Compact Low Power | V280 | VX700 | C7M ULV 1.20GHz C7M ULV 1.2GHz | PCMCIA |
| Extreme Low Power | 1981 | Intel US15W | Atom Z530 1.6GHz | PCIExpress / SDIO(SD Card) |

12.1" Rugged Tablet PC

MIL-810F Std Tablet PC supporting Intel Atom / Core 2 Due/ Celeron M and VIA C7M



| | Core Name | Platform Chipset | Support Performance | Expansion (Ex/In) |
|-------------------|-----------|------------------|--|----------------------------|
| Perform High | 1880 | Intel 945GME | Core 2 Duo 1.06GHz Celeron M 1.2GHz | PCIExpress / MiniPCIe |
| New Atom | IA81 | Intel 945GSE | Atom N270 1.6GHz | PCIExpress / MiniPCIe |
| Quality | I681 | Intel 855GME | Celeron M 1.0GHz | |
| Compact Low Power | V280 | VX700 | C7M ULV 1.20GHz C7M ULV 1.2GHz | PCMCIA |
| Extreme Low Power | 1981 | Intel US15W | Atom Z530 1.6GHz | PCIExpress / SDIO(SD Card) |



**Leader for
Rugged Mobility Value**

Fully Rugged Mobile Computing Solution

Certification

MIL-810F Compliance for

- MIL-810F Std M501.4 High Temp.
- MIL-810F Std M502.4 Low Temperature
- MIL-810F Std M514.5 Vibration
- MIL-810F Std M516.5 Shock
- MIL-810F Std M516.5 Transit Drop



MIL-810F Std M516 Transit Drop Test



Fully IP54 Water-Dust Proof



CE/FCC Class B



Customize Your Tablet PC

Develop your Tablet PC with Winmate Professional
Customized Capabilities



- Full Range of Platform offerings
- Customized Components Integration



- Versatile Housing Design
- Peripheral Integration



- Turn Your Idea into Real Application

Order Information

Three sizes are available: **8.4", 10.4", 12.1"**

Five platforms are available: **I880, IA81, I681, V280, I981**

Please contact our sales representative for more product order information
sales@winmate.com.tw