

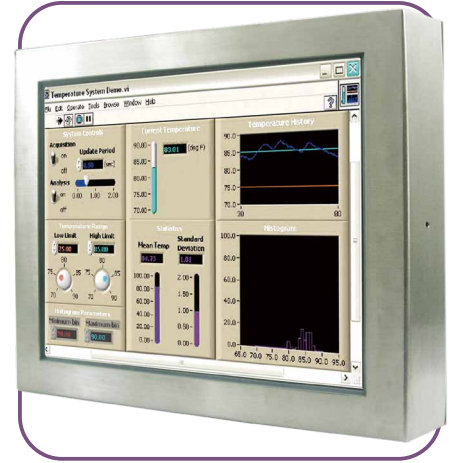
Full IP65 Chassis LCD

21.5" (Stainless Design)



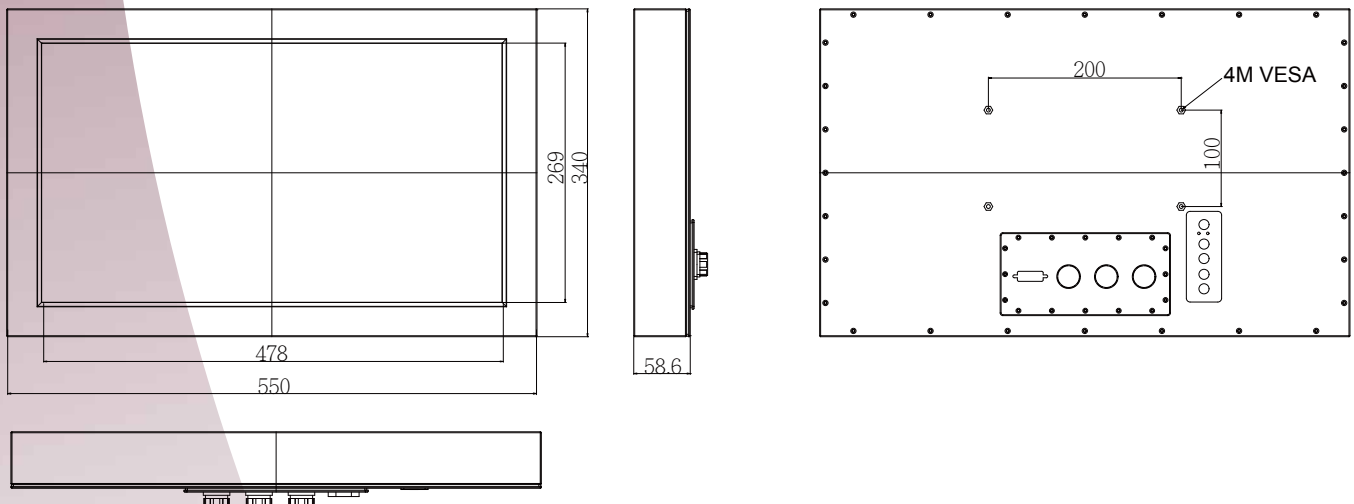
Specifications

| | |
|--------------------------------|---|
| Model Name | W22L100-65A3 (LED) |
| Panel Size | 21.5" (16:9) |
| Active Display Area(mm) | 476.64 (H) x 268.11 (V) |
| Pixel Pitch(mm) | 0.248 (H) x 0.248 (V) |
| Number of Pixels | 1920 x 1080 |
| Contrast Ratio | 3000:1 (typ.) |
| Display Color | 16.7M (8bits/color) |
| Brightness(cd/m ²) | 250 (typ.) |
| Viewing Angle(CR>=10) | -89~89 (H) ; -89~89 (V) |
| Synchronization Range | |
| Horizontal/Vertical | 31.5~60.0 KHz / 60~75 Hz |
| Recommended Resolution | 1920 x 1080 @60HZ |
| I/O | 3 pin Power cable (IP65 connector) 12 pin VGA cable (IP65 connector) 12 pin RS232 or Video Cable (IP65 connector)(Optional) |
| Power Source | 12V DC in, with External AC-DC Adapter (100~240V) |
| Power Consumption | 50W typical, normal operation |
| Housing | SUS 316/ AISI 316 stainless steel |
| Power Management | VESA DPMS Compliant |
| Plug & Play | VESA DDC 1/2B |
| Optional Touch Screen | Resistive |
| Optional Optical bonding | For Moisture Prevention |



*Due to Panel material's deviation, different panel supplier will set different specific variance range to optical characteristics. The factors of time used, Lamp current, Ambient temperature will influence the optical measurements.

Mechanical Drawing

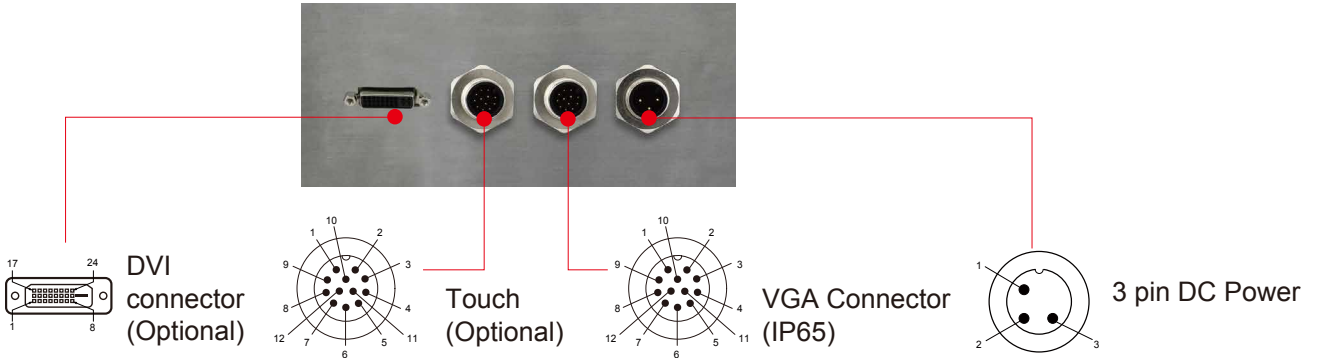


* Note: this is a simplified drawing and some components are not marked in detail. Please contact our sales representative if you need further product information.

Full IP65 Chassis LCD

IO Layout

Back Side (I/O)

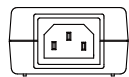
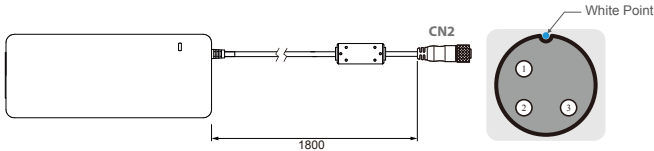


Cable List

| LCD | IP65 connector | PC side IO type |
|-----------------|----------------|-----------------|
| DC power | 3pin | Female(2.5 fai) |
| USB(optional) | 12pin | Male(type A) |
| RS232(optional) | 12pin | Female(D-sub 9) |
| VGA | 12pin | Male(D-sub 15) |

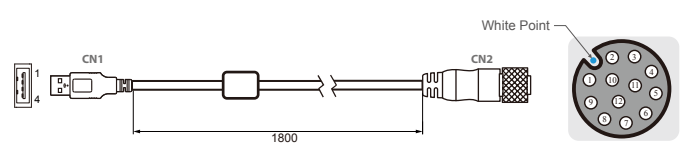
IP65 Cable/Pin Define

Power Cable



| Pin No. | Symbols | Color | Pin No. | Symbols | Color |
|---------|---------|-----------|---------|---------|--------------|
| CN1-1 | VIN - | NO ASSIGN | CN2-1 | VCC+ | Flow Adapter |
| CN1-2 | VIN - | NO ASSIGN | CN2-2 | GND | Flow Adapter |
| CN1-3 | VIN - | NO ASSIGN | CN2-3 | VCC - | Flow Adapter |

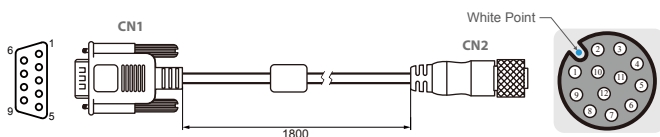
USB Cable



| Pin No. | Symbols | Color | Pin No. | Symbols | Color |
|---------|---------|-------|------------|---------|-------|
| CN1-2 | VCC | Red | CN2-1 | VCC | Red |
| CN1-3 | D- | White | CN2-2 | D- | White |
| CN1-4 | D+ | Green | CN2-3 | D+ | Green |
| CN1-5 | GND | Black | CN2-4 | GND | Black |
| CN1-9 | GND | Black | CN2 Shield | | Black |

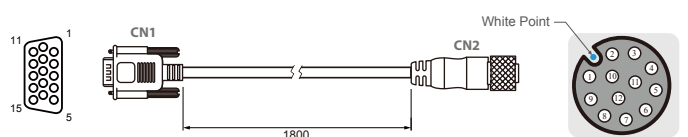
Twisted pairs

RS232 Cable



| Pin No. | Symbols | Color | Pin No. | Symbols | Color |
|---------|----------|--------|---------|----------|--------|
| CN1-1 | DCD-CON2 | Green | CN2-1 | DCD-CON2 | Green |
| CN1-6 | DSR-CON2 | Brown | CN2-2 | DSR-CON2 | Brown |
| CN1-2 | RXD-CON2 | Red | CN2-3 | RXD-CON2 | Red |
| CN1-7 | RTS-CON2 | Orange | CN2-4 | RTS-CON2 | Orange |
| CN1-3 | TXD-CON2 | Blue | CN2-5 | TXD-CON2 | Blue |
| CN1-8 | CTS-CON2 | White | CN2-6 | CTS-CON2 | White |
| CN1-4 | DTR-CON2 | Purple | CN2-7 | DTR-CON2 | Purple |
| CN1-9 | RI-CON2 | Yellow | CN2-8 | RI-CON2 | Yellow |
| CN1-5 | GND-CON2 | Black | CN2-9 | GND-CON2 | Black |

VGA Cable



| Pin No. | Symbols | Color | Pin No. | Symbols | Color |
|---------|---------|--------|---------|---------|--------|
| CN1-1 | R | Red | CN2-1 | R | Red |
| CN1-6 | R-GND | Black | CN2-2 | R-GND | Black |
| CN1-2 | G | Green | CN2-3 | G | Green |
| CN1-7 | G-GND | Black | CN2-4 | G-GND | Black |
| CN1-3 | B | Blue | CN2-5 | B | Blue |
| CN1-8 | B-GND | Black | CN2-6 | B-GND | Black |
| CN1-12 | SDA | Yellow | CN2-7 | SDA | Yellow |
| CN1-13 | HS | Orange | CN2-8 | HS | Orange |
| CN1-14 | VS | White | CN2-9 | VS | White |
| CN1-15 | SCL | Brown | CN2-10 | SCL | Brown |

coaxial