

Open Frame LCD

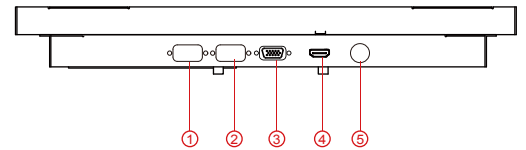
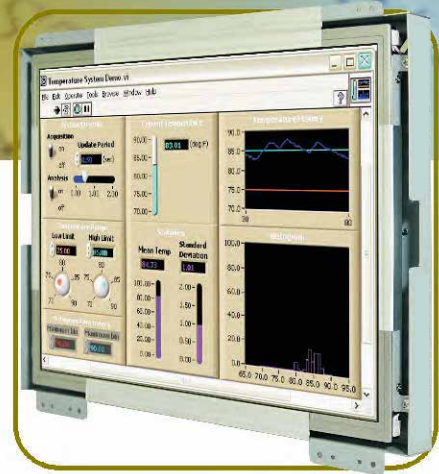
Open Frame LCD

15"

Specifications



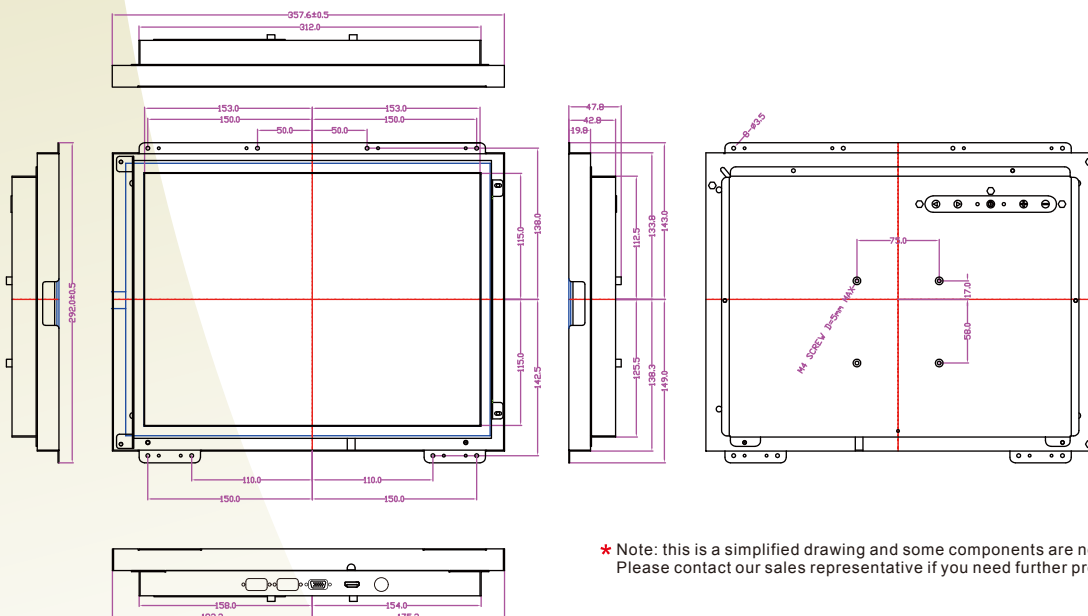
Model	R15L100-OFA1
Panel Size	15"
Active Display Area(mm)	304.1 (H) x 228.1 (V)
Resolution	1024 x 768
Contrast Ratio	700:1 (Typical)
Display Color	16.2M
Brightness(cd/m ²)	550 (Typical)
Viewing Angle(CR>=10)	-80~80 (H) ; -70~70(V)
Standard Input Signal	1 x VGA 1 x HDMI
Input Signal (Optional)	*1x DVI *1x S-video *1x Composite
Power Input	12V DC input, with external AC to DC Adapter
Power Consumption	20W typical, Normal operation
Operating temperature	0~50°C
Storage Temperature	-10~60°C
Touch Screen (Optional)	Resistive P-cap. (Customized) SAW
Remote Control (Optional)	RS232 port
Audio (Optional)	Audio input Stereo speakers
IR Remote Controller (Optional)	13 keys controller with receiver kit
Accessories	Power Adapter VGA cable HDMI cable



1. RS-232 for remote control (Optional)
2. RS-232/USB Touch
3. VGA
4. HDMI
5. 12V DC-in

*Outside dimension and I/O will be different from standard

Mechanical Drawing



UNIT:mm

* Note: this is a simplified drawing and some components are not marked in detail. Please contact our sales representative if you need further product information.