

EAC Mini IL20EAC-N is an industrial IoT gateway with low power consuming Intel® Apollo Lake N3350 1.1 GHz processor and great expansion possibilities. Expansion module offers great options from additional serial interfaces, USB ports to Bluetooth 4.0, Wi-Fi and 4G. Wireless connectivity and all necessary connectors allow the EAC Mini IL20EAC-N to send data from manufacturing facilities directly to cloud server. Compact size and expansions with more than 30 different combinations make EAC Mini is suitable for smart factory and machine automation applications.

Product Features

- Intel® Apollo Lake N3350 1.1 GHz
- Fanless cooling system
- Compact size 100 x 70 x 31 mm (w/o mounting bracket)
- Expansion module with 30+ combinations
- Various mounting options: desk, wall, VESA, din-rail, pole
- Suitable for smart factory applications

Optional Configuration

- **Optional Storage**
32GB mSATA
- **Optional Mounting**
VESA Mounting
DIN-Rail Mounting
Pole Mounting

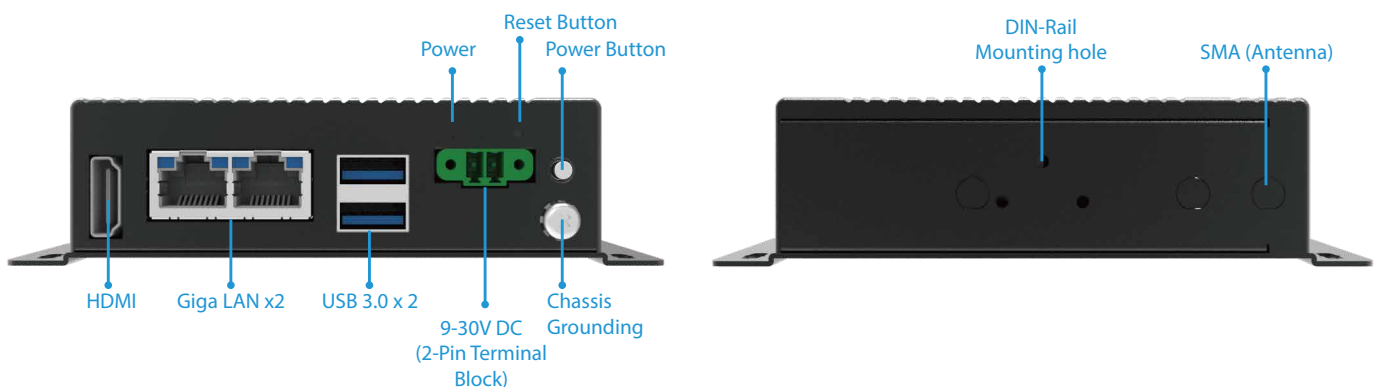


Optional Expansion Module

- SKU1 (3-Port Isolated RS-232/422/485, DB9)
- SKU2 (3-Port USB 2.0)
- SKU3 (2-Port Gigabit Ethernet, RJ45)
- SKU4 (24-Channel Isolated Digital I/O w/ counter, DB37)
- SKU5 (802.11 a/b/g/n 2T2R w/ Bluetooth 4.0)
- SKU6 (4G/ 3G/ LTE Cellular Module, GPS, SIM-card holder, SMA x 2)
- SKU7 (2-Port Isolated CANBus mPCIe, CANOpen, DB9)



Appearance



Product Specifications

System Specification		Environment	
CPU	Intel® Apollo Lake N3350 1.1 GHz	Operating Temp.	0~50° C (32~122° F)
Graphics Engine	Intel® HD Graphics	Storage Temp.	0~70° C (32~158° F)
BIOS	Insyde UEFI	Operating Humidity	10~95% RH @ 40°C (non-condensing)
Watchdog Timer	Programmable 256 levels, timer interval 1 to 255 sec.	Shock	Operating, IEC 60068-2-27
Technology	4GB LPDDR3 1866MHz	Vibration	Operating, IEC 60068-2-64
Storage		IP Rating	IP30
eMMC	Onboard 32 GB	Certificate	
mSATA	Optional	EMC & Safety	CE, FCC
Expansion		Operating System (Optional)	
mPCIe	1 x Full-size mPCIe slot	OS	Windows® 10 IoT Core Windows® 10 IoT Enterprise Linux Ubuntu
USB Wafer	2 x USB Wafer	Expansion Module (Optional)	
External I/O		SKU1	3-Port Isolated RS-232/422/485, DB9
USB	2 x USB3.0	SKU2	3-Port USB 2.0
Ethernet	2 x Giga LAN RJ45 Connector	SKU3	2-Port Gigabit Ethernet, RJ45
HDMI	1 x HDMI, supports 1920 x 1080@60 Hz	SKU4	24-Channel Isolated Digital I/O w/ counter, DB37
Buttons and LED Indicators		SKU5	802.11 a/b/g/n 2T2R w/ Bluetooth 4.0
LED Indicator	1 x Power	SKU6	4G/ 3G/ LTE Cellular Module, GPS, SIM-card holder, SMA x 2
Button	1 x Power Button 1 x Reset Button	SKU7	2-Port Isolated CANBus mPCIe, CANOpen, DB9
Power Management		Accessories	
Power Supply	9V to 30V DC, 2-Pin Terminal Block	Standard	<ul style="list-style-type: none"> Quick Start Guide (P/N #915211101025) Driver CD(P/N #917111101000) Terminal Block 2 pin to 2.5Ø Female Adapter Cable (P/N #94J602G020K2)
Grounding Protection	Chassis Grounding	Optional	<ul style="list-style-type: none"> WLAN External Antenna (P/N #39700000000H) WWAN External Antenna (P/N #397SM0000002) AC Adapter 12V/ 40W (P/N #9220123C6000) VESA Mounting Kit (P/N #821118561001) DIN Rail Mounting Kit (P/N #821118551400)
Mechanical Specification			
Dimensions	100 (W) x 70 (H) x 31(D) mm(One layer) 100 (W) x 70 (H) x 61(D) mm(Double layer)		
Weight	0.6 kg (One layer), 0.7 kg (double layer)		
Mounting	Desk Mounting (Default), Wall Mounting (Default), VESA Mounting (Optional), DIN-Rail Mounting (Optional), Pole Mounting (Optional)		
Cooling System	Fanless		
Enclosure	Metal Housing		

Mechanical Drawing

